

# Introducing

# SEATHEATER™

## Seat Heating Kit

This kit works with **SEATSAVER** **SEATGLOVES**  
and most aftermarket seat covers.

### Features & Benefits:

- Now heated seat elements can be easily installed beneath fitted aftermarket seat covers!
- “Plug & Play” easy installation, powered by the vehicle accessory power outlet.
- With SeatSavers, they can be installed on both the front or rear seats (vehicle accessory power outlet required).
- PTC heating elements, Made in USA by Check Corp., radiate heat evenly and self-regulate for comfort.
- Patented technology in the PTC heating elements ensures uniform warmth with no potential for overheating.
- Covercraft designed unique “envelopes” to securely hold the heating elements, with grip material on the base and a layer of spacer-knit fabric on the top, to allow even heat transfer.
- Our use of “envelopes” allows SeatSavers and SeatGloves to remain machine washable when soiled.

The cushion heating element is 11”L x 9.75”W and the back/lumbar heating element is 8”L x 9.5”W (dimensions are for the live area, not including the tail).



Heating pads fit under seat covers



Heating pad shown in SeatHeater™ “envelope”



Seat heater elements (for two seats)



Special “envelopes” for heating pads



Power plug with INDIVIDUAL on/off heater controls

### This Kit Consists Of:

- A PAIR of seat heater elements (for two seats), for both the seat base and seatback.
- Special “envelopes” for all heating pads (4).
- Wiring harness that PLUGS INTO THE VEHICLE ACCESSORY POWER OUTLET.
- A power plug with INDIVIDUAL on/off heater controls.

### Easy to Install –

1. – Insert the heating elements into each of the SeatHeater™ envelopes.
2. – The envelope with the strap and side release buckle is for each seat base.
3. – Place SeatHeaters onto the seats, carefully push the “tails” with wire connections between the seatback and seat base.
4. – Install seat covers over the SeatHeaters.
5. – Attach wire harness and plug into the vehicle accessory power outlet.



Part No. SE1002



100 Enterprise Blvd., Pauls Valley, OK 73075

# PTC

## Positive Temperature Coefficient

PTC technology delivers major performance, safety and reliability benefits.

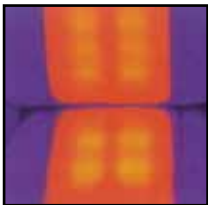
## Enhanced User Comfort & Safety

The delivery of a constant, comfortable heat level offers added safety and protection against over-temperature conditions commonly found in comparable wire heaters.

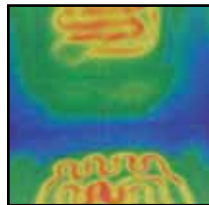
## Long Life Reliability

PTC heaters have passed extensive reliability and durability tests, virtually eliminating field problems and warranty issues.

## Infrared Heat Profile



PTC Heater



Wire Heater



## Self-Regulating Temperature

PTC heaters incorporate an automatic temperature ceiling which delivers accurate end-user comfort, as well as reliable fail-safe performance, to ensure safety and avoid warranty concerns.

## Faster-To-Ideal Temp

Your customer will enjoy the comfort of rapidly reaching optimum heat and the uniformity of even, continuous warmth.

## Seat Heater Technology Comparison

Category	PTC Heater	Wire Type Heater	Carbon Fiber Heater
Self Regulation	Yes	Sensor Required	Sensor Required
Short Circuit Result	Self-cauterizes	Burn potential	Burn potential
Fold-Over Result	<5°C Increase	30°C Increase	15°C Increase
Current Draw	2.5A steady rate	4.5A steady rate	3.9A steady rate
Independent Diagnostics	Not Required	Required	Required

### Warranty

SeatHeaters carry a 1 year warranty against becoming unserviceable during normal use.